

# GOLDEN FLOWER CHINESE HERBS

News  Winter 2007



Dear Golden Flower Chinese Herbs Customer,

Happy New Year! 2007 begins Golden Flower Chinese Herbs' 18th year of serving the Oriental Medicine community. We wish you all of the very best as the Year of the Boar unfolds. We hope that you find this newsletter useful and informative.

Thank you very much for using our products and services.

*John Scott, DOM and Lorena Monda, DOM*

## TANG KUEI AND PEONY: CAN A CHINESE HERB FORMULA BE A GODSEND?

*Stefan A. Filer, DOM*

With leaps and bounds in technological advancement in the realm of western medicine, it's a wonder that a practice that is 4000 years old can even exist along side. This is a thought that I was pondering to myself as my wife and I sat in amazement as she received her ultrasound in 4D. Yes, 4D. This is a remarkable "virtual" way of seeing your child in the womb. This technology is usually reserved for extensive care under a parinatologist for high-risk pregnancy. This is the term that would be used for several months as my wife and I are expecting triplets. We were told as a general rule that she would be going on strict bed rest between 20 and 24 weeks with in-home monitoring.

At this point I remembered when my daughter (now ten years old) was born. Her mother was in danger of delivering early at around 24 weeks. She was rushed to the hospital and put on magnesium sulfate (commonly used to calm contractions to help keep the baby in the womb longer to better the chance for optimal health). I started her on a Chinese herb formula called Dang Gui Shao Yao San (Tang Kuei and Peony) from Golden Flower Chinese Herbs here in Albuquerque, NM. This formula (often used for irregular menses) also has indications for habitual miscarriage and weakness during pregnancy.

I started her on this formula gradually, and inside of a week, she was off of the magnesium sulfate. I kept her on the formula until my daughter was born. She wanted to come late at that point and labor was induced. Recovery time was also minimal as I kept her on the formula to recover.

Returning to the present and the triplets, I started my wife on the same formula from the very beginning of the pregnancy. She was able to keep working full-time up until the beginning of September (28 weeks). She has gained a healthy 80 lbs (which is necessary for healthy triplets), and she is still able to walk up and down the stairs of our two story house on average of ten times per day. As I stated before, the parinatologist will usually order in-home monitoring for the mother at about 20 weeks. My wife is now at 32 weeks and our parinatologist has forgone the use of home monitoring because she is doing so well. She has picked up the nickname "The Poster Child for Multiples" from everyone at the clinic because of her health and the health of our triplets being so incredibly good. There are many things during a pregnancy that could be considered a blessing. I truly believe that Tang Kuei and Peony Formula is one of those blessings.

# Treating Colds and Flu with Chinese Herbal Remedies

By John Heuertz, DOM

Influenza infection is responsible for an average of 114,000 hospitalizations and 20,000 deaths annually in the United States alone. The primary consensus recommendation of the CDC (Centers for Disease Control), American Lung Association, and the WHO (World Health Organization) to address seasonal influenza for susceptible persons is to get the annual flu vaccination. Unfortunately, supplies are almost always short of demand. Furthermore, there is no guarantee that the vaccine will immunize the patient for the particular strain that is active in a given year. Vaccines are prepared prior to the flu season based on a “best guess” prediction of which strain will pose the most significant threat for that particular season. The problem is clear; in TCM, we believe we have answers and we can help.

The American Lung Association declares that: “Antivirals, when started within 2 days after flu symptoms appear, can reduce the duration of the illness and the severity of the symptoms.”<sup>1</sup> The *Materia Medica of Chinese Medicine* has many scientifically-confirmed antivirals, some of the most powerful of which are found in popular patent formulas such as Gan Mao Ling, Yin Chiao San, Zhong Gan Ling, and proprietary formulas, such as Golden Flower Chinese Herbs’ Viola Clear Fire Formula. Timely, proper administration of these and other formulas can successfully shorten the course of colds or flu and significantly reduce the symptoms caused by these viruses.

The treatment of externally contracted disease has one of the largest formularies among the many branches of Chinese medicine. This phenomenon, in no small way, is a testament to the influence of the *Shang Han Lun* as a seminal text of herbal prescriptive medicine in China; but more significantly, it reflects the astonishing complexity and diversity that the course of these pathogens can take when they have broken through the body’s defenses and established themselves within. No other disharmony approaches the dynamism and variety of external pathogens as they move and lodge, transform and linger, intensify and diminish through and within the body’s systems of channels, organs, stages, levels, and burners (as we are accustomed to classify them.)

For the clinician, the importance of understanding the nature of externally contracted (or externally triggered) disease is evident in the fact that a significant portion of the *Shang Han Lun* is devoted to formulas designed to remedy a situation made worse by the administration of improper formulas at an earlier stage of damage. In such cases, if the pattern had initially been identified correctly, the complications would not have developed.

The consequences of contracting an external pathogen can range from a stiff neck and runny nose to pneumonia, coma, and death; the course can last from a couple of hours to a lifetime. It is obvious that it is far beyond the scope of any quick reference guide to give a comprehensive treatment of this subject. Fortunately, colds and flu (that is, “the common cold” and “influenza”) represent only a small portion of these externally contracted diseases and much has been learned in the modern era to assist our choice of formulas.

## COLD OR FLU? – A BIOMEDICAL MODEL 2

Bio-medical science has learned that colds and flu, though sometimes indistinguishable from one another in their clinical manifestations, are caused by two different classifications of virus. There are over 100 different cold viruses, the rhinoviruses causing approximately 50% of all infections. Conversely, there are only 3 major types of influenza virus: A, B, and C. The A type has either an H or an N antigen component attached and these can undergo slight and major modifications known as “drift” and “shift” respectively. The major “shifts” occur only about once per decade; “drifting” occurs about once a year and is largely responsible for the annual nature of the flu season. The mutation occurring in a drift is sufficient to disallow a pre-immunity to the new version of the same strain. It is therefore possible to be infected annually by the same antigen type and for the older versions to remain in circulation for many years. You are not immune until you have developed the antibody for a specific drift.

Though sometimes very similar, the flu is, in general, more severe than the common cold and is attracted to a somewhat different sort of tissue than the common cold. The cold virus attacks the nose (see “Etiology” in the table opposite) and remains a respiratory disease; the flu virus prefers the lung itself, and can affect the whole body. The difference in their affinities is one of the reasons that the flu tends to be more severe than a cold; since the lungs are a vital organ with exposure to external pathogens, the potential damage is more serious and the defense system requires greater intensity. More distinctions can be seen from the table (opposite) compiled from multiple sources.

Certain groups have been determined by the CDC and WHO to be at high risk for influenza developing into serious complications. Those groups are mainly:

- Ages 6-23 months, and over 65
- People with chronic lung disease such as asthma, emphysema, chronic bronchitis, bronchiectasis, tuberculosis, or cystic fibrosis
- People who have heart disease
- People who have chronic metabolic disorders such as diabetes
- People with severe anemia
- People undergoing treatments which suppress immunity

## Influenza and Common Cold - A Symptomatic Comparison

Symptoms	Cold	Flu
Fever	Not common, usually less than 101.5 F	Characteristic, high, 102-104 F, lasting 3-4 days
Headache	Not common	Prominent
Loss of appetite	Common, but usually mild	Characteristic, pronounced
Generalized aches and pains	Mild	Can be severe
Fatigue / Weakness	Slight	Can be extreme, lasting up to 3 weeks
Extreme exhaustion	Never	Early, pronounced, and can linger for days
Stuffy nose and/or blocked sinuses	Common	Occasional
Sneezing	Almost always	Occasional
Sore throat	Common	Occasional
Chest discomfort and cough	Mild to moderate; cough is usually hacking	Common, can become severe and manifest as several different types of cough
Duration	Mild- 2-3 days; Average- one week; Severe- up to two weeks	Commonly 2-5 days, can linger for up to three weeks
Incubation	8-12 hours	1-4 days after exposure
Etiology	Virus contacts the front of the nasal passage by contaminated fingers or by droplets spread by an infected person's cough or sneeze. Virus is transported to adenoid area by the nose where it attaches to a special receptor and is taken into the cell where it is replicated. Once in adenoids, virus can affect bronchial tubes, sinuses and ears. Symptoms occurs as part of the body's immune response.	Influenza enters the respiratory tract and eventually strikes the lungs where tissues become inflamed and swollen, body reacts with "flu-like" symptoms.
Contagious phase	From 24 hours before onset of symptoms up to 5 days after symptoms appear.	Adults are contagious from 1 day before symptoms appear and up to 3-7 days after symptoms appear. Children can be contagious up to one week after fever disperses
Frequency	Adults: 2-3 per year; Children: 6-10	Usually 1 per year, but can contract each of the two A-types and a B-type annually. C-type is rare
Complications	None serious, but some secondary problems may occur including ear aches, sinus congestion	Bronchitis, pneumonia, death
Prevention	Universal precautions: hand washing, avoid touching your eyes, nose, and mouth, etc., No close contact with infected persons	Annual vaccine, limiting contact with infected persons
Treatment	Rest, plenty of fluids, avoid alcohol, tobacco, and stress; take over-the-counter medications to relieve symptoms	One of five prescriptive antiviral medications, over-the-counter symptom-relief medicines

## FACTS ABOUT THE FLU VACCINE

Biomedical epidemiologists strongly recommend flu vaccines to most groups. Both the CDC and the WHO strongly encourage the vaccination except for people who have an anaphylactic allergic reaction to eggs, and those who have previously developed Guillain-Barre Syndrome (GBS). Health care practitioners, especially those providing care for patients in the “high risk” categories are encouraged to get vaccinated in order to prevent becoming carriers. Most people for whom the vaccine is recommended do not have reactions to it. When reactions occur, the person might develop slight fever, muscle aches, or a generalized unwell feeling within the first 24 hours.

The flu vaccine is made from an inactive virus. The official consensus of bio-medicine is that you cannot “catch” the flu from the vaccine. People who develop symptoms after immunization, whereas they may be reacting to the vaccine, are not actually suffering from the flu itself, which is thought to be impossible from an inactivated virus. Their “flu-like” symptoms are considerably more mild and of a shorter duration than if they had developed the virus. This is thought to be an autoimmune reaction, an adjustment the body makes while it has been stimulated to develop the antibody by the vaccine.

## RECOMMENDED PREVENTATIVE STRATEGIES FROM BIOMEDICINE

The main way that illnesses like colds and the flu are spread is by respiratory droplets. The source of these droplets are mainly coughs and sneezes, but it is important to understand that the infected person does not have to be in the room at the same time as another person in order to spread the infection. Many forms of these viruses can live on surfaces such as tabletops, doorknobs and telephone receivers for up to 2 hours. If you have contacted a surface with a live virus, all that is needed for you to become infected is for you to touch your eyes, nose, or mouth before you have properly washed your hands.

There are a number of common sense (and perhaps not-so-common sense) precautions one can take to reduce the spread of infection. These precautions should be observed by everyone.



## *The main categories of prevention are:*

### 1) COVER YOUR NOSE AND MOUTH WHEN YOU SNEEZE.

The best way to cover your mouth and nose when you cough is with a disposable tissue. Discard the tissue immediately in a proper receptacle, and wash your hands after discarding. If no tissue is available, please note that sneezing into your hands is one of the worst options you have. Hands contact more surfaces in the environment than any other part of our bodies and will spread the germs almost as readily as sneezing or coughing without covering your mouth. If you do not have a tissue or anything you can sneeze into and throw away, the latest recommendation from epidemiologists is to sneeze into the upper part of your sleeve near your shoulder. The material of your clothing is usually absorbent; the upper sleeve is convenient for that sudden urge to sneeze or cough; and other people are far less likely to have contact with your upper sleeve than with your hands. When traveling during flu season you should always bring along some tissues, just in case.

### 2) CLEAN HANDS OFTEN.

We say “cleaning” your hands rather than “washing” your hands because running water is not always available, especially if you are traveling. Alcohol-based hand cleaners are now commonly found in most stores that sell pharmaceuticals or toiletries.

These have been shown to be effective in keeping hands free from germs. The correct hand-washing procedure, according to the CDC is to:

- First, wet hands and apply liquid soap or clean bar soap. If using bar soap, replace it on a rack which allows it to drain.
- Next, rub hands together vigorously, scrubbing all contours of the surface.
- Continue for 15-20 seconds.
- Rinse well and dry hands with forced warm air or disposable paper towels.

**3) KEEP IMMUNE SYSTEM STRONG.**

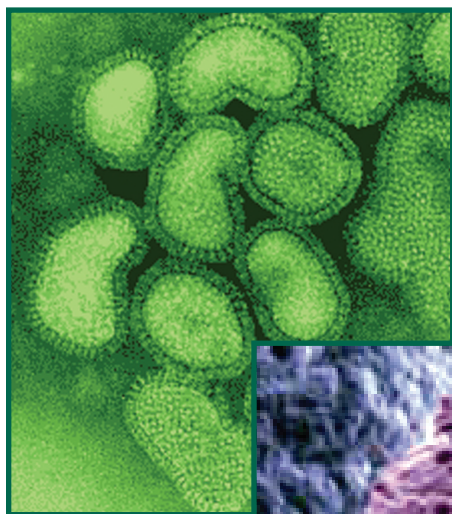
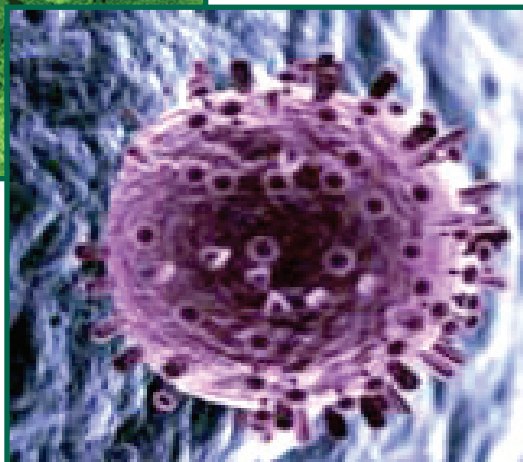
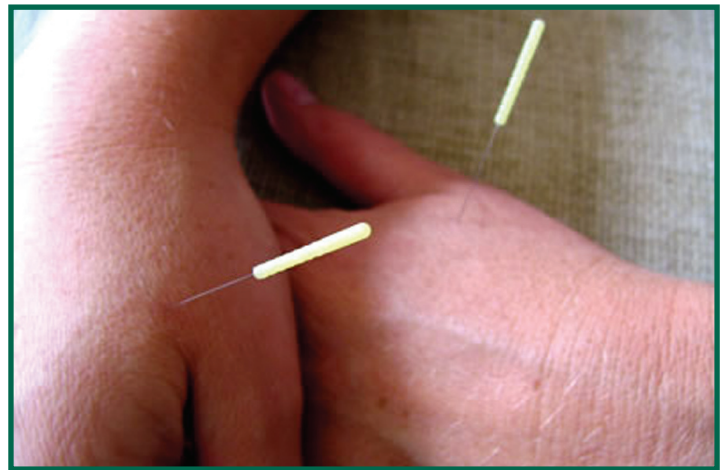
Keeping the immune system strong can mean the difference between almost getting sick and developing full-blown symptoms; it can also influence the duration and severity of the illness. The CDC recommends getting plenty of sleep, staying physically active, drinking plenty of water, and eating a healthy diet to keep your immune system strong. [See PARTII for traditional Chinese herbal formulas that can boost the immune system. Traditional medical wisdom also recommends qi gong practice or other forms of meditation to keep healthy.]

**4) TEACH ENTIRE HOUSEHOLD TO OBSERVE GERM-PREVENTION HABITS.**

The final strategy is to make sure everyone in the household understands and follows the precautions. These precautions promote a safe living environment. It is especially important to teach these precautions to children. Most of the details can be understood by children as young as 2 years old with proper instruction, repetition, and supervision from parents.

**PART II:****TRADITIONAL CHINESE MEDICAL MODEL**

Simple Wind-Cold and Wind-Heat patterns are normally thought to enter the body via the pores of the skin due to a relative weakness of the wei qi compared to the relative strength of the pathogenic factor. The entry point is usually in the area of the throat and neck for pathogens that develop into respiratory infections. These can be expelled by exterior-releasing formulas successfully.

*The Cold Virus**The Flu Virus*

On the other hand, according to theories set forth by the Wen Bing School (Warm Disease School), Warm Disease enters the body via the nose and mouth and cannot be released simply by venting them with pungent, surface-relieving herbs. It was a great breakthrough for the Wen Bing School that they were able to determine that pathogens can be spread from infected human to infected human. Many cases of the flu belong to the Warm Disease category. With Warm Disease, fevers tend to be higher, and there is a tendency for the heat to dry body fluids and damage the yin.

There are usually more stages involved in treating Warm Disease or severe Wind-Heat over simple Wind-Heat or Wind-Cold patterns. While heat signs are prevalent, clearing heat, fire, and toxin should be a part of the strategy, in addition to addressing prominent symptoms such as cough, or body aches. During remission and recovery, clearing latent fire and support of yin may become necessary.

“Sneezing into your hands is one of the worst options you have.”

## PREVENTATIVE STRATEGIES

There are two basic proactive strategies Chinese herbal medicine provides against the development of an infection of influenza or the common cold. The first is to boost the wei (protective) qi BEFORE exposure; the second is to prevent an exposure from developing into an infection. If exposure has already occurred, or is believed to have occurred, but no symptoms have yet developed you can choose formulas from the “release exterior” category or simply prescribe one of the modern Chinese formulas developed for their anti-viral properties. (See “Strategies to Treat Active Infections” for anti-viral formulas.)

### Jade Windscreen Formula

**(Yu Ping Feng San)** has a strong action to fortify the body’s defenses PRIOR to exposure or before symptoms have manifested. Because astragalus root (huang qi) consolidates the exterior, this is an excellent formula for people who tend to get frequent wind-cold infections or allergic symptoms when there is constitutional wei qi deficiency; the same action to consolidate the exterior can be counter-productive if the symptoms have already become pronounced. The other two ingredients, siler root (fang feng) and atractylodes rhizome (bai zhu) make Jade Windscreen Formula especially useful to prevent wind-cold and wind-cold-damp pathogens. It is safe to take this formula throughout cold and flu season or allergy seasons.



### Jade Screen and Xanthium Formula

**(Yu Ping Feng Jia Cang Er San)** adds to Jade Windscreen Formula a strong action to dry dampness, reduce swelling, clear heat, and improve blood circulation in the sinuses. It can be used preventively prior to exposure or even after the onset of symptoms. Jade Screen and Xanthium Formula is most effective preventively when the patient is prone to nasal and sinus symptoms; and symptomatically when the nasal discharge has a clear or white color.

### Astragalus and Ligustrum Formula

**(Huang Qi Dong Qing Pian)** is based upon fu zheng therapeutic principles for patients who suffer from an immune deficiency with a kidney component, such as AIDS Related Complex (ARC), or patients undergoing chemotherapy or radiation treatment. This formula builds white blood cells to strengthen the immune system. Due to the tonic nature of this formula it is best when taken to strengthen the immune system BEFORE an immune response has been triggered by a virus entering the body.

## STRATEGIES TO TREAT ACTIVE INFECTIONS

During an active viral infection it is beneficial to approach the treatment relentlessly. Most formulas that treat viral infections are active in the body for about 4 hours, reaching their highest concentration approximately 2 hours after administration. If a dose (2-4 tabs, depending on body weight and severity of infection) is taken every 2 or 3 hours, a consistent level of attack can be maintained, allowing the virus little chance of revitalization and shortening the duration of the illness. In addition to a well-designed herbal protocol, it is recommended to drink plenty of fluids, rest, and abstain from alcohol, tobacco, and phlegm-producing foods, such as sweets and dairy.

### Pueraria Formula

**(Ge Gen Tang)** is a great formula to have on hand during the first signs of a wind-cold invasion of the tai-yang aspect. It is beneficial for you and your patients to keep it on hand before exposure, since it works best during the first few hours of the initial stage of a wind-cold invasion. Educate your patients to monitor the signs of stiffness in the neck or upper back, the

beginnings of generalized body aches, and aversion to wind and/or cold with absence of sweating (low-grade fever may or may not be present.) If taken when the above signs are first observed, Pueraria Formula can effectively eliminate the symptoms and guide the wind-cold out of the body within a few hours.

*Editor: This formula is not currently available due to FDA ban on products containing ephedra*

### Gan Mao Ling Formula

**(Gan Mao Ling Pian)** is a modern formulation of Chinese herbs chosen for their anti-viral properties. The anti-viral herbs are cold; persons with a strong, or yang, constitution can safely use Gan Mao Ling Formula after suspected exposure but prior to onset of symptoms in order to kill the virus before it has an opportunity to fully engage an immune response. Patients with very weak or pronounced cold constitutions should reserve use of Gan Mao Ling Formula until they become symptomatic, since the cold herbs can damage the qi of the middle burner if taken without discretion.

### Yin Chiao Formula

**(Yin Qiao San)** was originally designed to treat wind-heat skin rashes such as chicken pox. Today it is used to treat a variety of wind-heat patterns affecting the upper body and respiratory tract with symptoms such as headache, mild fever or skin itching. It is especially indicated when a mild to moderate sore throat is part of the pattern, when the wind-heat is affecting the skin, or during the first 12 hours of onset.

### **Zhong Gan Ling Formula**

**(Zhong Gan Ling Pian)** is another modern formulation which utilizes herbs with strong anti-viral actions. Its cold nature makes it particularly effective for treating influenza with high fever. The high percentage of pueraria (ge gen) helps to release the muscle layer to alleviate body aches while the virus is being attacked. Zhong Gan Ling Formula can be used during or after the initial onset of symptoms. It is one of the strongest formulas against influenza that TCM has to offer.

### **Minor Bupleurum Formula**

**(Xiao Chai Hu Tang)** clears heat, transforms phlegm and releases pathogens from the shao yang-stage. It is used traditionally when an exterior pathogen is causing any of the following: alternating chills and fever, costal tension or distension, or nausea with a bitter taste in the mouth. Japanese Kampo medicine prescribes Minor Bupleurum Formula to children and adults as a preventative for the common cold since it has anti-viral action, plus tonic and phlegm resolving action. Do not give to children under 2, whose yin can be easily damaged from drying. (See Bupleurum and Cinnamon Formula for comparison.)



### **Bupleurum and Cinnamon Formula**

**(Chai Hu Gui Zhi Tang)** is similar to Minor Bupleurum Formula but is more appropriate when there are no heat signs. It differs also in that it is designed to be more supportive than Minor Bupleurum Formula and is therefore safer for long-term use, especially when the patient's constitution is cold. In treating colds and flu, Bupleurum and Cinnamon Formula is better for treating wind-cold, while Minor Bupleurum Formula is better for wind-heat pathogens. Bupleurum and Cinnamon Formula also has the additional function of adjusting the wei qi. Both formulas can be used to dislodge a lingering pathogen from the body.

### **Minor Bluegreen Dragon Formula**

**(Xiao Qing Long Tang)** is the formula of choice for copious amounts of white phlegm in the lungs. It is a warming and drying formula and therefore contraindicated for conditions with heat or without pronounced phlegm or dampness in the lungs. It is very effective for asthma when there are no heat signs. Using smaller doses, parents can use Minor Bluegreen Dragon Formula to treat croupy coughs in children.

*Editor: This formula is not currently available due to FDA ban on products containing ephedra*

### **Viola Clear Fire Formula**

**(Di Ding Qing Huo Pian)** is a safe, yet strong anti-viral formula with a mild anti-bacterial and anti-fungal action. It is not designed to release the exterior and is therefore more effective when used to treat heat, fire and toxin in the qi aspect of the body. The formula is quite effective against respiratory viruses, but can also be used to treat heat, fire and toxin anywhere in the body, including such tenacious viruses as HIV, Epstein-Barr Virus, and other long-term or chronic toxic infections. Use only during the active phase of the virus, i.e., when there are some signs of heat or fire present.

### **Xanthium Nasal Formula** **(Jia Wei Cang Er Pian).**

Though predominance of sinus infection is more likely to be the result of a common cold or bacterial infection rather than the flu virus, this formula is included in this list to provide further clarification of symptomatic treatments in the wind-heat category. The distinguishing symptom for which this formula is indicated is consistently yellow sinus discharge (not just first discharge of the morning).

### **Notes**

<sup>1</sup> American Lung Association, Cold and Flu Guidelines: Myths and Facts. Available on their website at [www.lungusa.org](http://www.lungusa.org)



<sup>2</sup> The biomedical information found in this section was compiled from published materials from the World Health Organization, The American Lung Association, and the Centers for Disease Control. All materials are available online at the respective websites.

John Heuertz, DOM is a graduate of the International Institute of Chinese Medicine and later served on their Faculty Advisory Board. He is a lecturer and research consultant for Golden Flower Chinese Herbs.



*We now carry  
Seirin Needles*



www.gfcherbs.com  505. 837. 2040  800. 729. 8509

Professional Education Program 2007

### **Jake Fratkin, OMD**

#### ***Advanced Topics in Chinese Herbal Clinical Practice***

**February 24, 2007**

**Houston, Texas**

Contact the American College of Acupuncture and  
Oriental Medicine in Houston for registration, cost,  
and details: 713-780-9777

**May 12, 2007**

**San Diego, California**

**August 4, 2007**

**Baltimore, Maryland**

**September 29, 2007**

**Portland, Oregon**

**November 10, 2007**

**Denver, Colorado**

### **Kirsti Reed, DOM**

#### ***Weight Loss and Oriental Medicine***

**April 28, 2007**

**Raleigh, North Carolina**

**May 19, 2007**

**Albuquerque, New Mexico**

**June 2, 2007**

**Chicago, Illinois**

**August 25, 2007**

**Minneapolis, Minnesota**

**October 6, 2007**

**Hartford, Connecticut**

**November 17, 2007**

**Tampa, Florida**

### **Lorena Monda, DOM**

#### ***Qi and Transformation: Working Effectively with Resistance and Change***

**June 9-10, 2007**

**Albuquerque, New Mexico**

For information and to register contact:  
Lorena Monda 505-867-8623

#### ***Integrative Psychology for Oriental Medicine: The Language of the Body as a Tool for Diagnosis and Treatment***

**October 27-28, 2007**

**Seattle, Washington**

For information and to register contact:  
Bastyr University 425-602-3075

### **Susan Johnson, LAc**

#### ***Master Tung's Magic Acupuncture Points***

##### ***Beginning Series***

**March 3-4, 2007 (last weekend)**

**Albuquerque, New Mexico**

##### ***3 Weekend Beginning Series***

**September 8-9, October 6-7,**

**November 3-4, 2007**

**Boston, Massachusetts**

##### ***3 Weekend Advanced Series***

**September 22-23, October 20-21,**

**November 17-18, 2007**

**Albuquerque, New Mexico**

### **Andrew Ellis**

#### ***Approaching Dermatologic Conditions Effectively with Chinese Medicine***

**February 17, 2007**

**Albuquerque, New Mexico**

**April 21, 2007**

**Oakland, California**

**April 28, 2007**

**Maui, Hawaii**

**April 29, 2007**

**Hilo, Hawaii**

**August 25, 2007**

**New York, New York**

**December 1, 2007**

**Boston, Massachusetts**

**October 13, 2007**

**Seattle, Washington**

### **Master Li Jun Feng**

#### ***Sheng Zhen Wuji Yuan Gong: The Qigong of Unconditional Love***

**November 30- December 2, 2007**  
**Albuquerque, New Mexico**

For information and to register contact:  
Lorena Monda 505-867-8623